



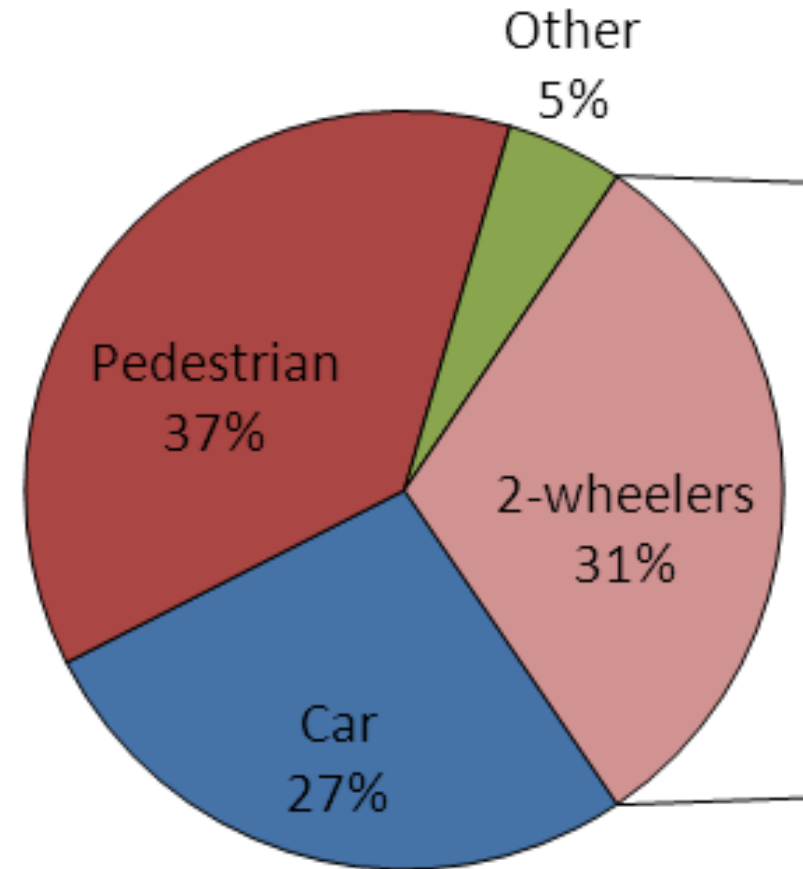
EUROPEAN CITIES AND REGIONS NETWORKING
FOR INNOVATIVE TRANSPORT SOLUTIONS

Road safety strategies in European cities

Volvo Road Safety Days, 8 November 2017
Dagmar Köhler, Polis

Why cities focus on vulnerable road users

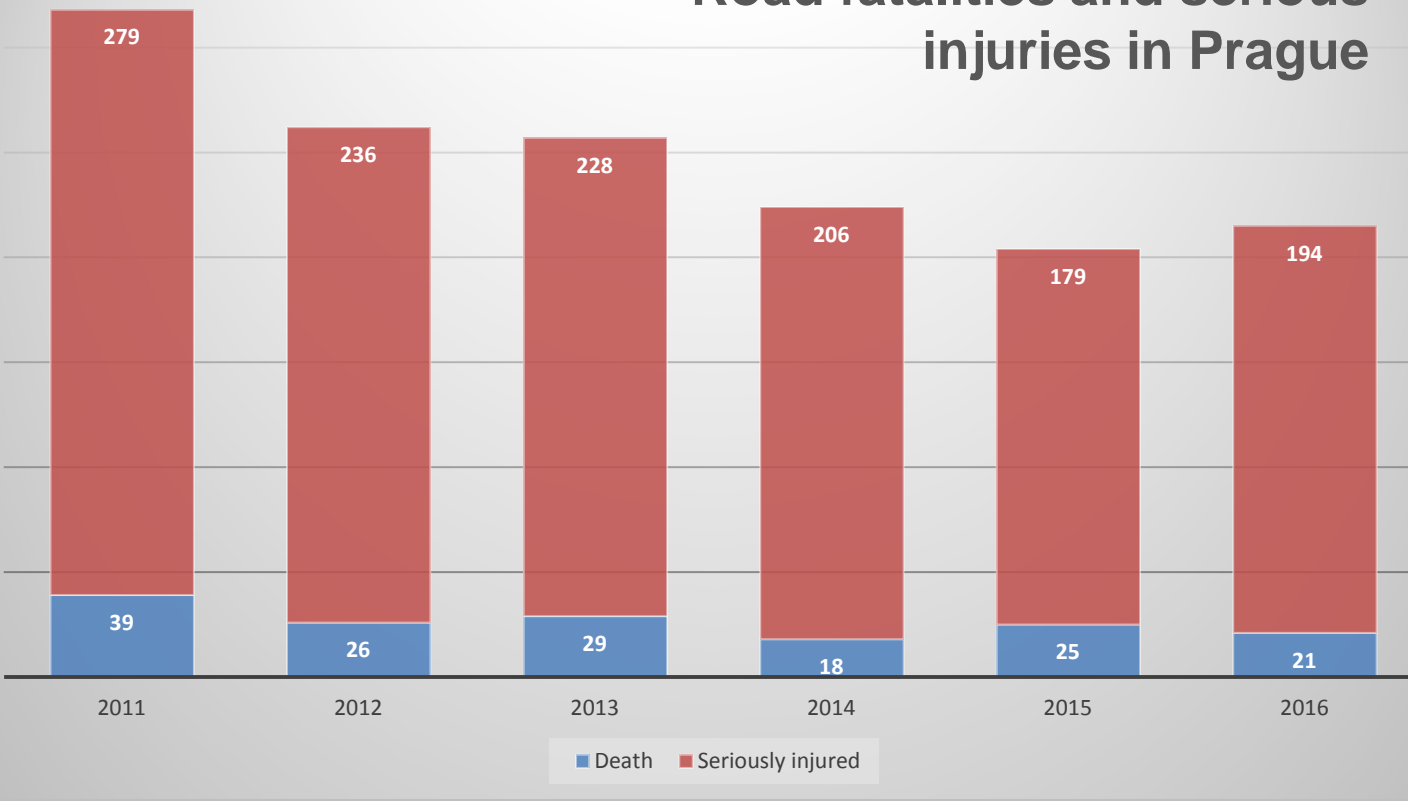
68% of urban road fatalities are vulnerable road users (pedestrians and 2-wheelers) (2011/12)



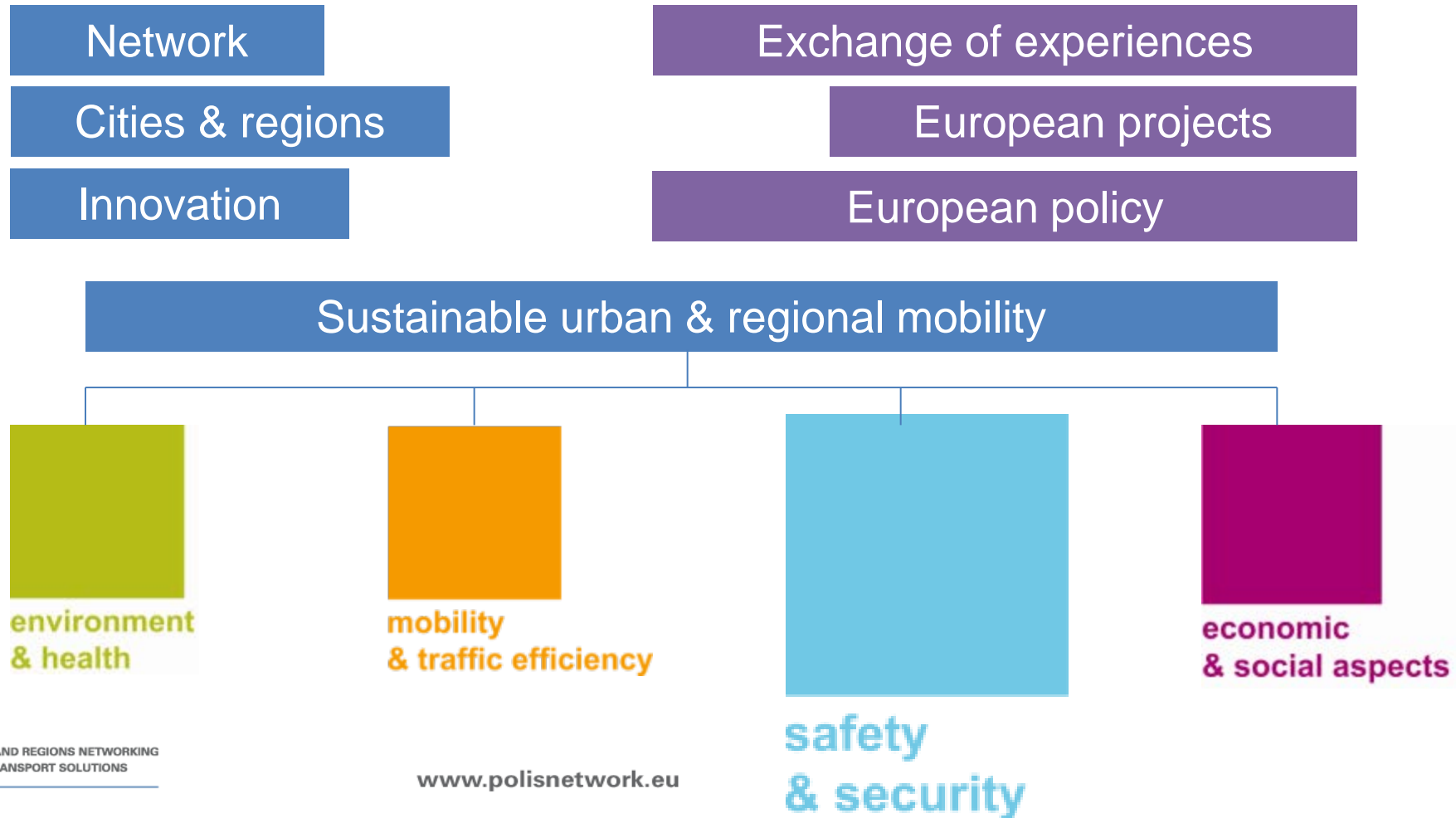
Share of road fatalities inside urban areas (2011/12)
Source: EC Road Safety Vademecum

Pedestrian fatalities in EU decrease at a lower rate

Road fatalities and serious injuries in Prague



Cities openly exchange in Polis road safety working group



A global urban accident database

- International Transport Forum's „Safer City Streets“ is building a database of accident data from cities across the world
- Alongside IRTAD's global road safety database
- **Cities involved:** Aguascalientes, Amsterdam, Astana, Auckland, Barcelona, Belgrade, Berlin, Bogotá, Bordeaux, Bournemouth, Brussels, Buenos Aires, Copenhagen, Dublin, Edmonton, Fortaleza, Guadalajara, Kiev, La Paz, Lisbon, London, Lyon, Madrid, Malmö, Melbourne, Mexico City, Milan, Montreal, Morelia, Nantes, New York City, Paris, Riga, Rio de Janeiro, Rome, São Paulo, Stockholm, Tel Aviv, The Hague, Vilnius, Warsaw, Zürich



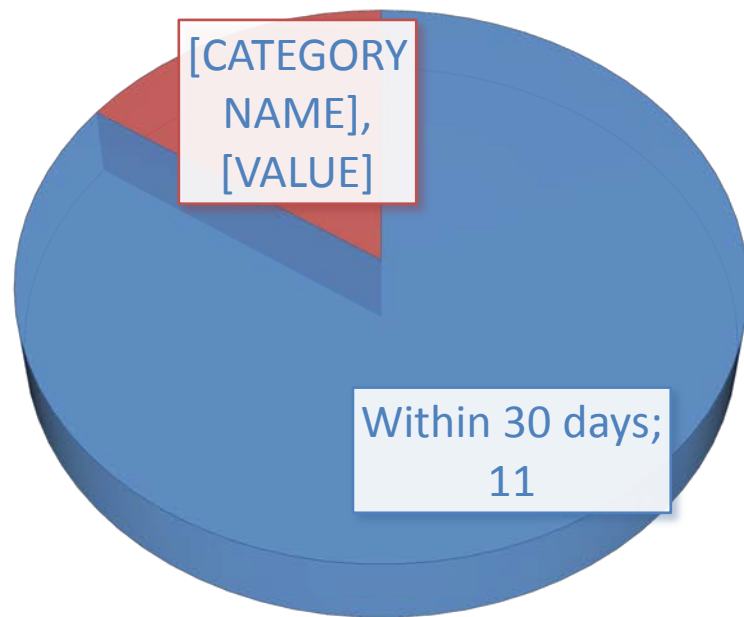
How do cities collect accident data?

- Polis study of 13 cities in cooperation with university of Hasselt
- **How do cities collect accident data?**
Which sources are used and how is accident data used for transport policy making?

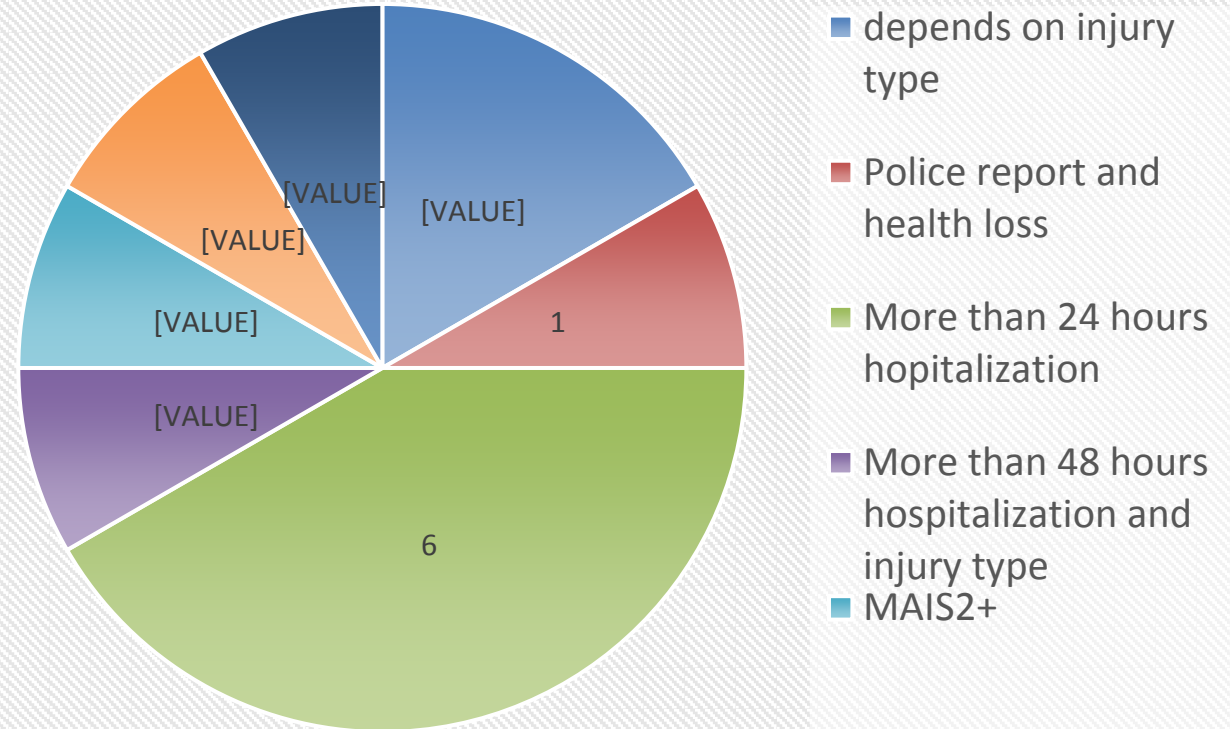
Amsterdam
Antwerp
Barcelona
Birmingham
Brussels
Budapest
London
Madrid
Nantes
Pisa
Prague
Stockholm
Toulouse

Difference of definitions

WHAT IS A FATALITY?



WHAT IS A "SERIOUS INJURY"?



Better data from different sources?

- **Only police**
(London, Madrid, Birmingham, Toulouse)
- **Police & Hospitals**
(Barcelona, Stockholm)
- **Police, hospital & emergency services**
(Amsterdam, Antwerp, Prague)
- **Police & road operators**
(Budapest)
- **Police & national database**
(Brussel, Nantes)
- **National database**
(Lisbon)

From data to road safety policy

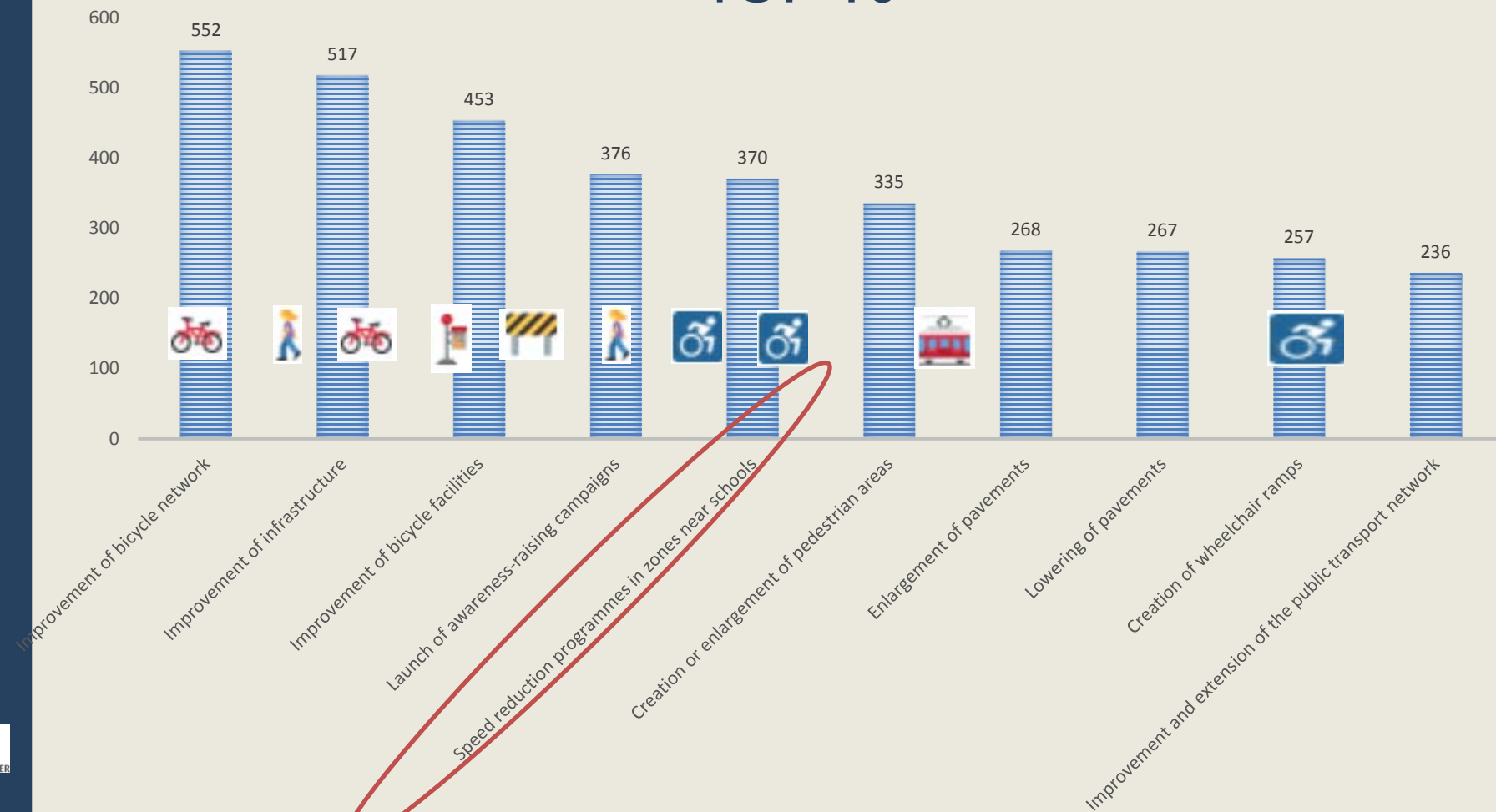
Safety & Sustainability: 2 sides of the same coin

Three 'E's'	Safety	Sustainability
Education	Awareness raising campaigns, Traffic education, behaviour	Awareness raising campaigns, modal shift, behavioural change
Engineering	Safe and forgiving roads, vehicles, ITS,	Interchanges, high quality public transport and infrastructure for sustainable transport modes,...
Enforcement	Speed limits, fines	Low-emission zones, access restrictions, air quality targets, pricing,...



7993 Permanent measures in 2017

TOP 10



The European Day without a road death

21 September 2017:
more than 120 events across
Europe and a total Twitter
reach of 25 million.

EDWARD is part of the
Mobility Week

<http://roadsafetydays.eu>



EUROPEAN
MOBILITY
WEEK #MOBILITYWEEK
16-22 SEPTEMBER 2017



Getting safer vehicles in cities

- Cities sign letter to call upon EC to ensure **safer cab design** for trucks under the General Safety Regulation
- **Last mile**: safer and cleaner vehicles via consolidation centres
- **Access restrictions**: Excluding polluting vehicles from inner-cities through low-emission zones



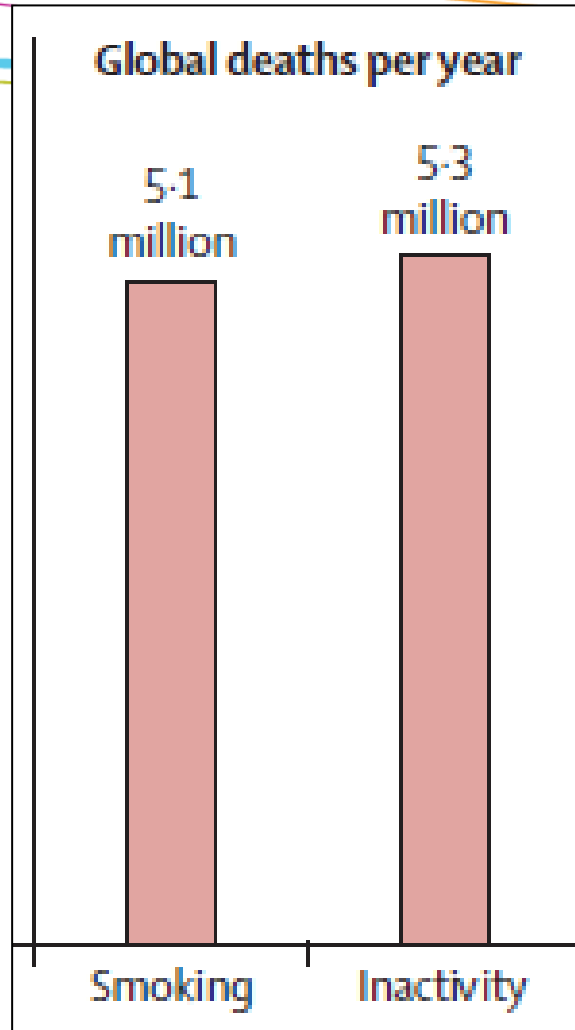
<http://urbanaccessregulations.eu/countries-mainmenu-147/czech-republic-mainmenu-448/praha-prague-permit>

Road safety impacts modal shift

- Safer roads, cycle lanes and footpaths will **encourage people** to walk and cycle
- **Health gains** through physical activity outweigh the risk for traffic casualties and exposures to air pollution



Sitting is the new smoking



© EHFG 2014 - Floris Oudshoorn - ComicHouse.nl

Thank you!

Dagmar Köhler
dkoehler@polisnetwork.eu
www.polisnetwork.eu

