



# Volvo Emballage Specifications

Volvo Group Packaging System

Volvo Emballage is a pool of packaging material used by over 3000 suppliers globally, and is the standard required by Volvo manufacturing plants worldwide. The Emballage process works as a bank account. You only pay for the packaging you actually use. In this document the specifications of Volvo Groups different packaging materials are listed.

# VOLVO

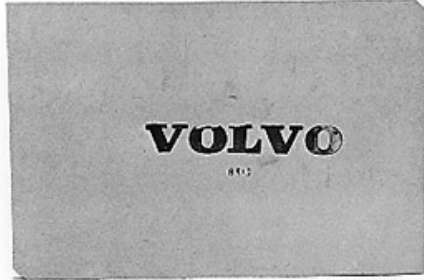
## Table of Contents

<b>1. INTERNAL DUNNAGE OPTIONS FOR THE “L” PALLETS (3 EACH)</b> .....	<b>0</b>
1.1. 61 - SPACER OF WOOD FIBRE, L INNER.....	0
1.2. 119 - SPACER OF CORR.BOARD/FOAM .....	0
1.3. 81 - SPACER OF PLASTIC, L INNER.....	1
<b>2. INTERNAL DUNNAGE OPTIONS FOR THE “K” PALLETS (2 EACH)</b> .....	<b>2</b>
2.1. 82 - SPACER OF PLASTIC, K INNER .....	2
2.2. 62 - SPACER OF WOOD FIBRE, K INNER .....	3
<b>3. INTERNAL DUNNAGE OPTIONS FOR THE “G” PALLETS (1 EACH)</b> .....	<b>3</b>
3.1. 66 - SPACER OF WOOD FIBRE, G INNER.....	3
<b>4. INTERNAL DUNNAGE OPTIONS FOR THE “H” PALLETS (1 EACH)</b> .....	<b>4</b>
4.1. 69 - SPACER OF WOOD FIBRE, H INNER .....	4
<b>5. INTERNAL DUNNAGE OPTIONS FOR THE “F” PALLETS (1 EACH)</b> .....	<b>4</b>
5.1. 65 - SPACER OF WOOD FIBRE, F INNER .....	4
<b>6. VOLVO PLASTIC PACKAGING</b> .....	<b>5</b>
6.1. VEMB 500 .....	5
6.2. VEMB 600 .....	5
6.3. VEMB 750 .....	6
6.4. VEMB 780 .....	6
6.5. VEMB 800 .....	7
6.6. VEMB 840 .....	7
<b>7. VOLVO WOODEN PACKAGING</b> .....	<b>8</b>
7.1. 720 Series Emballage.....	8
7.2. 700 Series Emballage.....	9
7.3. F Emballage.....	10
7.4. G Emballage.....	11
7.5. H Emballage .....	12
7.6. L Emballage.....	13
7.7. K Emballage .....	14
<b>8. PACKAGING DIMENSIONS</b> .....	<b>15</b>
8.1. Emballage Dimensions and Weights - Plastic .....	15
8.1.1. Inner Dimensions and Weights - Plastic.....	15
8.1.2. Outer Dimensions and Weights - Plastic.....	15
8.2. Emballage Dimensions and Weights - Wood.....	16
8.2.1. Inner Dimensions and Weights - Wood.....	16
8.2.2. Outer Dimensions and Weights - Wood .....	17
<b>9. NORTH AMERICA EMBALLAGE CONTACTS</b> .....	<b>18</b>

# VOLVO

## 1. INTERNAL DUNNAGE OPTIONS FOR THE “L” PALLETS (3 each)

### 1.1. 61 - SPACER OF WOOD FIBRE, L INNER



Designer		Drawing no		Material	
VTAB		V4-6-0070 VT		WOOD	
Marking			Type		
V-EMB			SPACERS		
Responsible				Distr. of costs	
Buyer	Owner	Develop	Distr	Transp	Handl
VTAB	VTAB	VTAB	VTAB	VTAB	VTAB
Store place, empties					
UNDER SHELTER					
Packing way, empties					
L2-100 + COVER 1021					
Dimension		Unit		Unit, empties	
Length in inches				45.67	48.23
Width in inches				29.92	32.28
Height in inches				0.12	21.65
Weight in pounds				5.75	687.84

### 1.2. 119 - SPACER OF CORR.BOARD/FOAM



Designer		Drawing no		Material	
VTAB		-		PAPER	
Marking			Type		
V-EMB EMB 119			SPACERS		
Responsible				Distr. of costs	
Buyer	Owner	Develop	Distr	Transp	Handl
VTAB	VTAB	VTAB	VTAB	VTAB	VTAB
Store place, empties					
VTA, GHD, SAL UNDER SHELTER					
Packing way, empties					
L4-130 + PLASTIC COVER 1041.					
Dimension		Unit		Unit, empties	
Length in inches				45.67	48.23
Width in inches				29.92	32.28
Height in inches				0.24	38.03
Weight in pounds				1.04	292.69

# VOLVO

## 1.3. 81 - SPACER OF PLASTIC, L INNER



Designer		Drawing no		Material	
VTAB/TH		81		PLASTIC	
Marking			Type		
V-EMB EMB 81			SPACERS		
Responsible				Distr. of costs	
Buyer	Owner	Develop	Distr	Transp	Handl
VTAB	VTAB	VTAB	VTAB	VTAB	VTAB
Store place, empties					
VTA, GHD, SAL UNDER SHELTER					
Packing way, empties					
L3-135 + COVER 1021					
Dimension		Unit		Unit, empties	
Length in inches		45.67		48.23	
Width in inches		29.92		32.28	
Height in inches		0.16		29.33	
Weight in pounds		6.98		1080.26	

# VOLVO

## 2. INTERNAL DUNNAGE OPTIONS FOR THE “K” PALLETS (2 each)

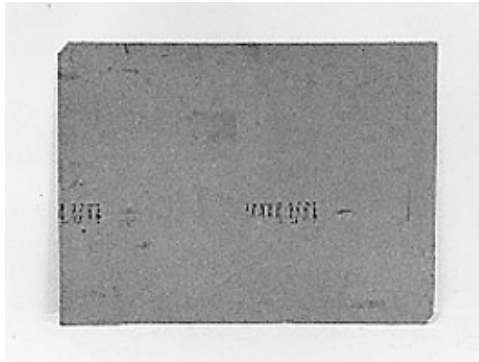
### 2.1. 82 - SPACER OF PLASTIC, K INNER



Designer		Drawing no		Material	
VTAB		0082		PLASTIC	
Marking			Type		
V-EMB 82			SPACERS		
Responsible				Distr. of costs	
Buyer	Owner	Develop	Distr	Transp	Handl
VTAB	VTAB	VTAB	VTAB	VTAB	VTAB
Store place, empties					
VTA, GHD, LYON UNDER SHELTER					
Packing way, empties					
K2-90 PCS					
Dimension		Unit		Unit, empties	
Length in mm				760	820
Width in mm				560	615
Height in mm				4	525
Volume in m3				0,001	0,260
Weight in kg				1,150	132,000
Part name					
VARIOUS					
Art per emb		Vehicle type		Pack ref no	
-		-		10082	
Reg date		Latest rev		Del date	
1999-01-07		2009-08-17			
Note					
NOTE! CLEAN PARTS ONLY					

# VOLVO

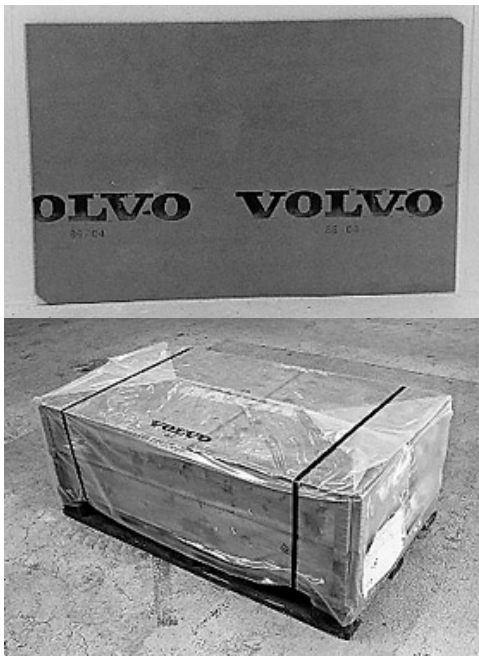
## 2.2. 62 - SPACER OF WOOD FIBRE, K INNER



Designer		Drawing no		Material	
VTAB		V4-6-0071 VT		WOOD	
Marking			Type		
V-EMB			SPACERS		
Responsible				Distr. of costs	
Buyer	Owner	Develop	Distr	Transp	Handl
VTAB	VTAB	VTAB	VTAB	VTAB	VTAB
Store place, empties					
UNDER SHELTER					
Packing way, empties					
K2-100 + COVER 1022					
Dimension		Unit		Unit, empties	
Length in inches				29.92	32.28
Width in inches				22.05	24.21
Height in inches				0.12	20.67
Weight in pounds				2.87	352.74

## 3. INTERNAL DUNNAGE OPTIONS FOR THE “G” PALLETS (1 each)

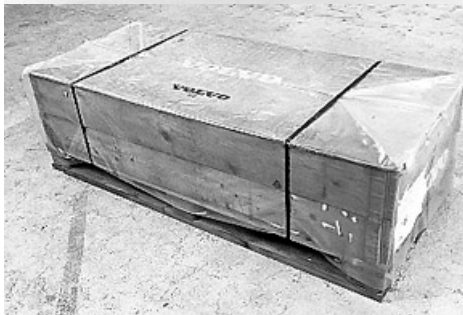
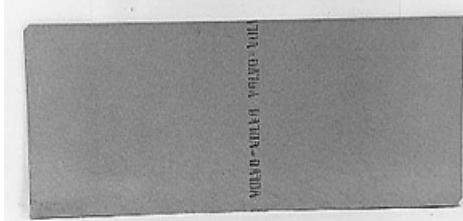
### 3.1. 66 - SPACER OF WOOD FIBRE, G INNER



Designer		Drawing no		Material	
VTAB		-		WOOD	
Marking			Type		
V-EMB			SPACERS		
Responsible				Distr. of costs	
Buyer	Owner	Develop	Distr	Transp	Handl
VTAB	VTAB	VTAB	VTAB	VTAB	VTAB
Store place, empties					
UNDER SHELTER					
Packing way, empties					
G2-100 + COVER 1026					
Dimension		Unit		Unit, empties	
Length in inches				54.53	57.09
Width in inches				29.92	32.28
Height in inches				0.12	21.65
Weight in pounds				7.05	842.16

## 4. INTERNAL DUNNAGE OPTIONS FOR THE “H” PALLETS (1 each)

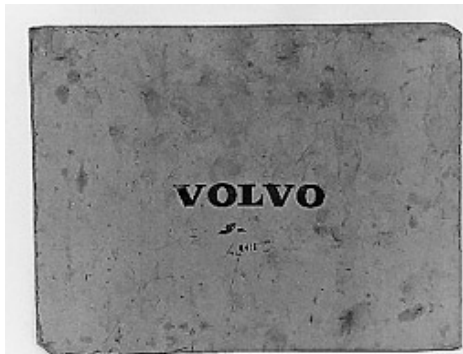
### 4.1. 69 - SPACER OF WOOD FIBRE, H INNER



Designer		Drawing no		Material	
VTAB		V4-6-0073 VT		WOOD	
Marking			Type		
V-EMB			SPACERS		
Responsible				Distr. of costs	
Buyer	Owner	Develop	Distr	Transp	Handl
VTAB	VTAB	VTAB	VTAB	VTAB	VTAB
Store place, empties					
UNDER SHELTER					
Packing way, empties					
H2-100 + COVER 1029					
Dimension		Unit		Unit, empties	
Length in inches				68.50	71.06
Width in inches				29.92	32.28
Height in inches				0.12	21.65
Weight in pounds				8.82	1038.38

## 5. INTERNAL DUNNAGE OPTIONS FOR THE “F” PALLETS (1 each)

### 5.1. 65 - SPACER OF WOOD FIBRE, F INNER

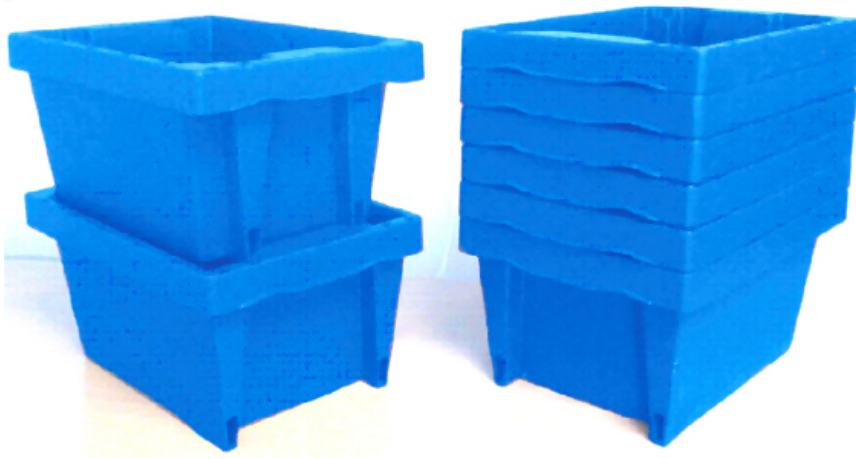


Designer		Drawing no		Material	
VTAB		V4-6-0072 VT		WOOD	
Marking			Type		
V-EMB			SPACERS		
Responsible				Distr. of costs	
Buyer	Owner	Develop	Distr	Transp	Handl
VTAB	VTAB	VTAB	VTAB	VTAB	VTAB
Store place, empties					
UNDER SHELTER					
Packing way, empties					
F2-100 + COVER 1025					
Dimension		Unit		Unit, empties	
Length in inches				61.81	64.17
Width in inches				45.67	48.03
Height in inches				0.12	22.28
Weight in pounds				12.13	1415.37

# VOLVO

## 6. Volvo Plastic Packaging

### 6.1. VEMB 500



<b>VEMB 500</b>				
<b>Inner Dimensions (inches)</b>				
EMB-type	Length	Width	Height	Weight lbs
500	8	7	5.9	0.99

### 6.2. VEMB 600



<b>VEMB 600</b>				
<b>Inner Dimensions (inches)</b>				
EMB-Type	Length	Width	Height	Weight lbs
600	19	7	5.9	2.74



# VOLVO

## 6.3. VEMB 750



<b>VEMB 750</b>				
<b>Inner Dimensions (inches)</b>				
EMB-Type	Length	Width	Height	Weight lbs
750 W/O lid	13.58	10.43	7.28	2.35
750 with lid	13.58	10.43	6.97	3.14

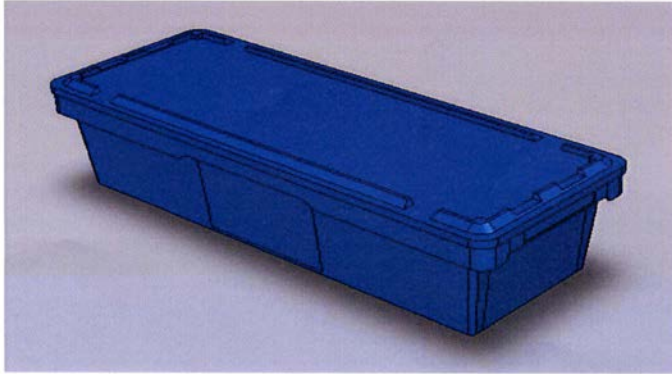
## 6.4. VEMB 780



<b>VEMB 780</b>				
<b>Inner Dimensions (inches)</b>				
EMB-Type	Length	Width	Height	Weight lbs
780 W/O lid	21.14	14.25	7.28	4.51
780 with lid	23.92	16.04	6.97	6.37

# VOLVO

## 6.5. VEMB 800



<b>VEMB 800</b>				
<b>Inner Dimensions (inches)</b>				
EMB-Type	Length	Width	Height	Weight lbs
800 W/O lid	27.16	10.43	7.28	5.5
800 with lid	27.16	10.43	6.97	7.16

## 6.6. VEMB 840



<b>VEMB 840</b>				
<b>Inner Dimensions (inches)</b>				
EMB-Type	Length	Width	Height	Weight lbs
840 W/O lid	29.33	22.24	7.28	6.57
840 with lid	29.33	22.24	6.97	10.23

## 7. Volvo Wooden Packaging

### 7.1. 720 Series Emballage



<b>720 Series Emballage</b>				
<b>Inner Dimensions (inches)</b>				
EMB-Type	Length	Width	Height	Weight lbs
724 (1)	108.3	43.2	14.4	200
724 (2)	108.3	43.2	22.1	236
724 (3)	108.3	43.2	29.8	271
724 (4)	108.3	43.2	37.5	306
724 (5)	108.3	43.2	45.1	342

## 7.2. 700 Series Emballage



<b>700 Series Emballage</b>				
<b>Inner Dimensions (inches)</b>				
EMB-Type	Length	Width	Height	Weight lbs
701(1)	92.83	30.43	7.2	172
701(2)	92.83	30.43	14.88	203
701(3)	92.83	30.43	22.55	234
701(4)	92.83	30.43	30.23	265
701(5)	92.83	30.43	37.91	296

## 7.3. F Emballage



<b>F Emballage</b>				
<b>Inner Dimensions (inches)</b>				
EMB-Type	Length	Width	Height	Weight lbs
F1	62.32	46.18	7.2	167
F2	62.32	46.18	14.88	199
F3	62.32	46.18	22.55	231
F4	62.32	46.18	30.23	263
F5	62.32	46.18	37.43	295

## 7.4. G Emballage



<b>G Emballage</b>				
<b>Inner Dimensions (inches)</b>				
EMB-Type	Length	Width	Height	Weight lbs
G1	55.24	30.43	7.2	111.33
G2	55.24	30.43	14.88	135.58
G3	55.24	30.43	22.55	159.83
G4	55.24	30.43	30.23	184
G5	55.24	30.43	37.43	208

# VOLVO

## 7.5. H Emballage



<b>H Emballage</b>				
<b>Inner Dimensions (inches)</b>				
EMB-Type	Length	Width	Height	Weight lbs
H1	69.21	30.43	7.2	125.66
H2	69.21	30.43	14.88	153
H3	69.21	30.43	22.55	181
H4	69.21	30.43	30.23	208.33
H5	69.21	30.43	37.43	235

## 7.6. L Emballage



<b>L Emballage</b>				
<b>Inner Dimensions (inches)</b>				
EMB-Type	Length	Width	Height	Weight lbs
L1	46.38	30.43	7.2	90
L2	46.38	30.43	14.88	112
L3	46.38	30.43	22.55	134
L4	46.38	30.43	30.23	156
L5	46.38	30.43	37.43	178



## 7.7. K Emballage



<b>K Emballage</b>				
<b>Inner Dimensions (inches)</b>				
EMB-Type	Length	Width	Height	Weight lbs
K1	30.43	22.36	7.2	47
K2	30.43	22.36	14.88	64
K3	30.43	22.36	22.55	80
K4	30.43	22.36	30.23	97
K5	30.43	22.36	37.43	112

# VOLVO

## 8. Packaging Dimensions



### 8.1. Emballage Dimensions and Weights - Plastic

#### 8.1.1. Inner Dimensions and Weights - Plastic

<b>Emballage Dimensions and Weights - Plastic (All units are in inches and pounds)</b>				
<b>EMB Type</b>	<b>Length ( Inner)</b>	<b>Width (Inner)</b>	<b>Height (Inner)</b>	<b>Weight (Lbs)</b>
500 (Inner)	8	7	5.9	0.99
600 (Inner)	19	7	5.9	2.74
750 W/O lid (Inner)	13.58	10.43	7.28	2.35
750 with lid (Inner)	13.58	10.43	6.97	3.14
780 W/O lid (Inner)	21.14	14.25	7.28	4.51
780 with lid (Inner)	21.14	14.25	6.97	6.37
800 W/O lid (Inner)	27.16	10.43	7.28	5.5
800 with lid (Inner)	27.16	10.43	6.97	7.16
840 W/O lid (Inner)	29.33	22.24	7.28	6.57
840 with lid (Inner)	29.33	22.24	6.97	10.23

#### 8.1.2. Outer Dimensions and Weights - Plastic

<b>Emballage Dimensions and Weights - Plastic (All units are in inches and pounds)</b>				
<b>EMB Type</b>	<b>Length (Outer)</b>	<b>Width (Outer)</b>	<b>Height (Outer)</b>	<b>Weight (Lbs)</b>
500 (W/O Lid) (Outer)	11.81	7.87	5.9	0.99
600 (W/O Lid) (Outer)	23.62	7.87	5.9	2.74
750 W/O lid (Outer)	15.76	11.82	7.88	2.35
750 with lid (Outer)	16.04	12.1	8.47	3.14
780 W/O lid (Outer)	23.64	15.76	7.88	4.51
780 with lid (Outer)	23.92	16.04	8.47	6.37
800 W/O lid (Outer)	31.49	11.81	7.88	5.5
800 with lid (Outer)	32.01	12.01	8.47	7.16
840 W/O lid (Outer)	31.52	23.64	7.88	6.93
840 with lid (Outer)	31.79	23.92	8.47	10.23

# VOLVO

## 8.2. Emballage Dimensions and Weights - Wood

### 8.2.1. Inner Dimensions and Weights - Wood

<b>Emballage Dimensions and Weights - Wood (All units are in inches and pounds)</b>				
<b>EMB Type (Wood)</b>	<b>Length (Inner)</b>	<b>Width (Inner)</b>	<b>Height (Inner)</b>	<b>Weight (Lbs)</b>
K1	30.43	22.36	7.20	47
K2	30.43	22.36	14.88	64
K3	30.43	22.36	22.56	80
K4	30.43	22.36	30.24	97
K5	30.43	22.36	37.91	112
L1	46.38	30.43	7.20	90
L2	46.38	30.43	14.88	112
L3	46.38	30.43	22.56	134
L4	46.38	30.43	30.24	156
L5	46.38	30.43	37.91	178
F1	62.32	46.18	7.20	167.6
F2	62.32	46.18	14.88	199.6
F3	62.32	46.18	22.56	231.5
F4	62.32	46.18	30.24	263.5
F5	62.32	46.18	37.91	295.5
G1	55.24	30.43	7.20	111.4
G2	55.24	30.43	14.88	135.6
G3	55.24	30.43	22.56	159.9
G4	55.24	30.43	30.24	184.1
G5	55.24	30.43	37.91	208.4
H1	69.21	30.43	7.2	125.7
H2	69.21	30.43	14.88	153.3
H3	69.21	30.43	22.56	180.8
H4	69.21	30.43	30.24	208.4
H5	69.21	30.43	37.91	235.9
701 - 1 Frame	92.83	30.43	7.2	172
701 - 2 Frame	92.83	30.43	14.88	202.9
701 - 3 Frame	92.83	30.43	22.56	233.7
701 - 4 Frame	92.83	30.43	30.24	264.6
701 - 5 Frame	92.83	30.43	37.97	295.5
724 – 1 Frame	108.3	43.2	14.4	200
724 – 2 Frame	108.3	43.2	22.1	236
724 – 3 frame	108.3	43.2	29.8	271
724 – 4 Frame	108.3	43.2	37.5	306
724 – 5 Frame	108.3	43.2	45.1	342



### 8.2.2. Outer Dimensions and Weights - Wood

<b>Emballage Dimensions and Weights - Wood (All units are in inches and pounds)</b>				
<b>EMB Type (Wood)</b>	<b>Length (Outer)</b>	<b>Width (Outer)</b>	<b>Height (Outer)</b>	<b>Weight (Lbs)</b>
K1	32.28	24.21	12.99	47.4
K2	32.28	24.21	64	63.9
K3	32.28	24.21	80	80.5
K4	32.28	24.21	97	97.0
K5	32.28	24.21	112	113.6
L1	48.22	32.28	13.98	90
L2	48.22	32.28	21.65	112
L3	48.22	32.28	29.33	134
L4	48.22	32.28	37	156
L5	48.22	32.28	44.69	178
F1	64.17	48	14.6	167
F2	64.17	48	22.28	199
F3	64.17	48	29.96	231
F4	64.17	48	37.64	263
F5	64.17	48	45.31	295
G1	56.9	32.28	13.98	111.3
G2	56.9	32.28	21.65	135.58
G3	56.9	32.28	29.33	159.83
G4	56.9	32.28	37	184
G5	56.9	32.28	44.69	208
H1	71.06	32.28	13.98	125.66
H2	71.06	32.28	21.65	153
H3	71.06	32.28	29.33	181
H4	71.06	32.28	37	208.33
H5	71.06	32.28	44.69	235
701 - 1 Frame	94.5	32.28	14.44	172
701 - 2 Frame	94.5	32.28	22.13	203
701 - 3 Frame	94.5	32.28	29.8	234
701 - 4 Frame	94.5	32.28	37.48	265
701 - 5 Frame	94.5	32.28	45.16	296
724 – 1 Frame	110.2	44.8	15.8	200
724 – 2 Frame	110.2	44.8	23.6	236
724 – 3 frame	110.2	44.8	31.5	271
724 – 4 Frame	110.2	44.8	39.4	306
724 – 5 Frame	110.2	44.8	47.24	342



## 9. North America Emballage Contacts

### **Shane Kennon**

Mack Truck Inc. - Macungie, PA Facility

Email: [shane.kennon@volvo.com](mailto:shane.kennon@volvo.com)

Phone: +1 336 895 5058

### **Denise Addison**

Volvo Truck North America - Dublin, VA Facility

Email: [denise.nrv.addison@volvo.com](mailto:denise.nrv.addison@volvo.com)

Phone: +1 540 674 2215

### **Volvo Logistics Services**

Volvo Logistics North America - Radford, VA Facility

Email: [napackaging@volvo.com](mailto:napackaging@volvo.com)

Phone: +1 866 488 6586